



Data Sheet



- **Output Current up to 200 A**
- **Up to 300 μ s pulse width**
- **Rise-time of <10 μ s**
- **Single-shot to 20 PPS**
- **Current monitor output 1 volt/100 amps**
- **Optimized for driving up to 12 bar stacks**
- **Only 4.8 oz**
- **Higher output current available**

The PLDD-200-12-20 is a compact, ultra-light weight pulsed current source designed to drive laser diode bars, arrays of laser diode bars, or any low impedance load. The unit features a high peak current of 200 amps with a rise-time of <10 μ s (load dependent) and a maximum pulse width of 300 μ s. The pulse repetition frequency can be varied from single shot to 20 PPS.

This driver's amplitude and pulse width are controlled by either an analog or digital input. It has a built-in intelligent energy limiter which allows for up to 50% greater output current under certain conditions. Should the maximum energy limit be exceeded the user is alerted and the unit can be reset manually or electronically.

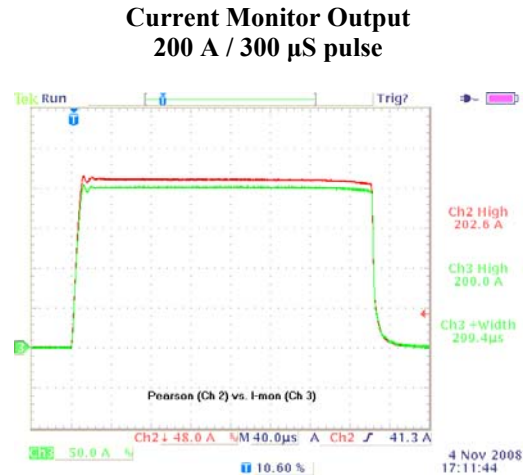
Using the optional Universal Interface Board (UIB-01) the user has easy access to all control pins. Commonly used signals on the UIB-01 are available through BNC connections such as the input trigger and the current monitor which allows the user a real time view of the current.

Multiple units can be operated in parallel allowing the user to achieve unprecedented current levels in a small, compact, and battery operated system.

The PLDD-200-12-20 requires a user supplied +15 to +28 volt input supply.



Specifications†	
Parameter	Value
Pulse Output Current	
Amplitude Range	0 – 200 A
Means of Adjustment	Analog input/internal adjustment with potentiometer
Pulse Rise Time	<10 μ s
Pulse Width	0-300 μ s (analog or digital input)
Pulse Recurrence Frequency Range	Up to 20 PPS at max current (300 μ s pulse)
Compliance Voltage	30 V*
Output Voltage	24 V min**
Output Connection	Twisted pair AWG 16, 6" length
Trigger Requirements	
Type	Analog pulse 0-2.0 V (0-200 A) Or 3.3/5 volt CMOS Input
Outputs	
Current Monitor	1.00 volt/100 amps into >10 kOhm 0.50 volt/100 amps into 50 Ohms
General	
Input Power	15-28 volts, ~40 mA typ. (idle) 24 volts, 1.6 A (20 PPS, 200 Apk, 300 μ s, 22 V load)
Dimensions (H X W X D) inches	1.16" X 1.77" X 5.46" (Approximate)



Comparison of the I-mon output and a Pearson current transformer.

Warning: Always discharge capacitor bank before connecting or removing any load

* No load voltage

**At 200 amps and 300 μ s and 65°C measured at output driver. Consult factory for other load requirements

†Specifications are subject to change without notice.

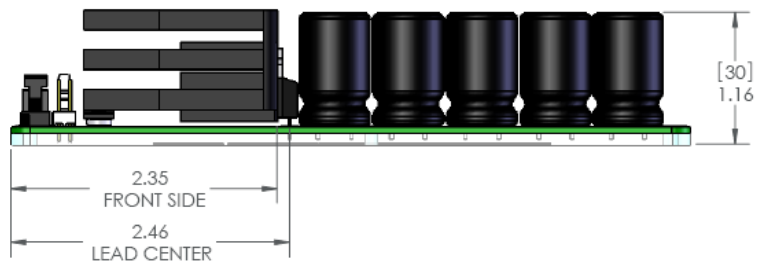
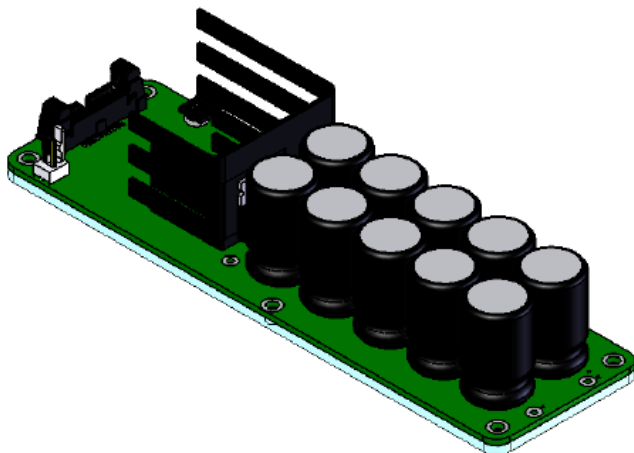
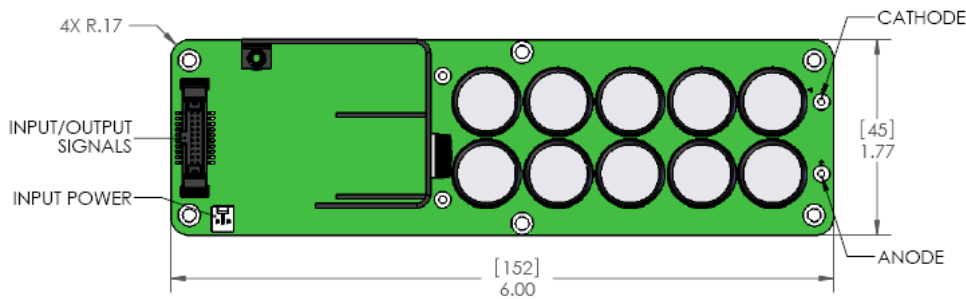
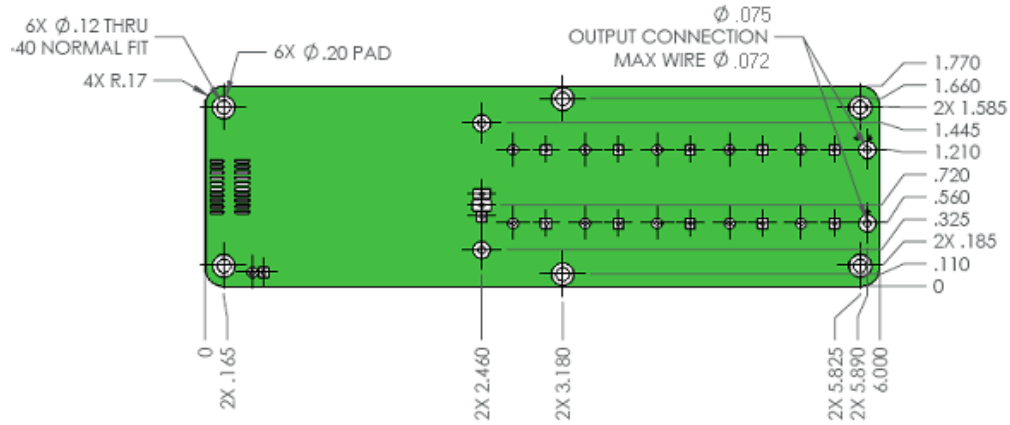
OptiSwitch Technology Corporation

6355 Nancy Ridge Drive, San Diego, CA 92121
Tel: (858) 452-8787 ◦ Fax: (858) 452-8788

Email: sales@optiswitch.com ◦ Web: <http://www.optiswitch.com>



Physical Dimensions*



*Dimensions are subject to change without notice.

OptiSwitch Technology Corporation

6355 Nancy Ridge Drive, San Diego, CA 92121

Tel: (858) 452-8787 \circ Fax: (858) 452-8788

Email: sales@optiswitch.com \circ Web: <http://www.optiswitch.com>